



Spare Parts Manual

1. MilkoScan™ FT3 — Spare Parts Manual

2. Introduction

2.1. Maintenance Procedures

2.1.1. 1. Pre-verification of Instrument before PM replacement

2.1.2. 2. Removal and Replacement

2.1.3. 3. Post-verification of Instrument after PM

2.1.4. 4. Instrument Check

2.1.5. 5. Software

2.1.6. 6. Instrument Performance Verification

3. Maintenance Procedures (w/Index)

3.1. 1. Pre-verification of Instrument before PM replacement

3.2. 2. Removal and Replacement

3.3. 3. Post-verification of Instrument after PM

3.4. 4. Instrument Check

3.5. 5. Software

3.6. 6. Instrument Performance Verification

4. Untitled

1. MilkoScan™ FT3 — Spare Parts Manual

Document No.: 60085771 / Rev. 4

Copyright: 2020 / All rights reserved

Publisher: FOSS Analytical A/S, Nils Foss Allé 1, DK-3400 Hillerød, Denmark

Tel: +45 7010 3370 | **Fax:** +45 7010 3371

All information is liable to change without prior notice. For latest information about documentation updates for your specific instrument, please contact your local FOSS representative.

Revision History

Rev.	Date of Issue	Revised Material
1	2020-04-09	First issue.
2	2020-08-19	Major update of spare parts and drawings.
3	2022-01-24	Major update of spare parts and drawings.
4	2022-06-22	Major update of spare parts and drawings.

Table of Contents

1. General

1.1 Explanation of Definitions

2. Waste Sensor

3. Pre-heater

4. Sample Pipette - Sample Intake Mod

5. [Sample Pipette Mod - Main Assy](#)
 6. [Sample Pipette Mod - Main Assy \(cont.\)](#)
 7. [System Pipette Mod](#)
 8. [IR-source](#)
 9. [Filterstick for IFU Manifold 24 µm](#)
 10. [Filterstick for IFU Manifold 34 µm](#)
 11. [Detector](#)
 12. [IF Unit Main](#)
 13. [IF Unit Main \(cont.\)](#)
 14. [BPV Mod Main](#)
 15. [M2 Pump Mod - Main Assy](#)
 16. [H-stage](#)
 17. [M1 Pump Mod - Main Assy](#)
 18. [CTR Mod - Main Assy](#)
 19. [Main Unit](#)
 20. [Main Unit \(cont.\)](#)
 21. [Main Unit \(cont.\)](#)
 22. [Main Unit - Tube Diagram](#)
 23. [Main Unit - Connection Diagram](#)
 24. [Basic Unit with Conductivity Module](#)
 25. [Index](#)
-

1. General

[Go to Part Index](#)

This document contains Spare Parts for MilkoScan™ FT3.

Warning: Please read Safety Precautions in the Service Manual prior to maintenance or exchange of spare parts. The system may only be repaired by personnel certified by FOSS.

1.1. Explanation of Definitions

Explanation of definitions used in this manual:

Term	Definition
Drawing No.	FOSS drawing number.
Page	Drawing page in FOSS database.
Part No.	Spare part number for ordering.
Prod. No.	FOSS production number.

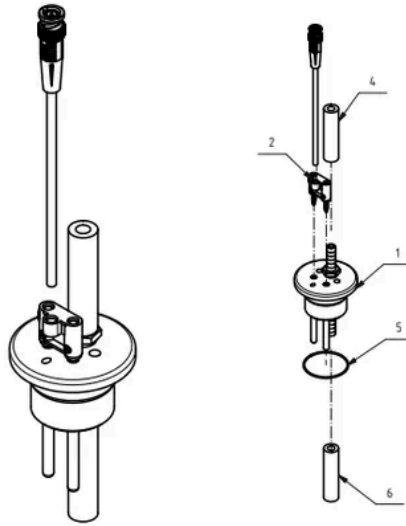
Note: When ordering new spare parts, please use the Part No. stated in this manual for the parts in question.

2. Waste Sensor

Drawing No.: 60093513 | **Page:** 100-1

Pos.	Part No.	Description	Prod. No.
2	60085248	BNC Male to double banana	
4	60078292	Tube ØØ008/016 Silicone	

(See Fig. 1)



60081085 Doc. Rev.02 Doc. Type:70

100

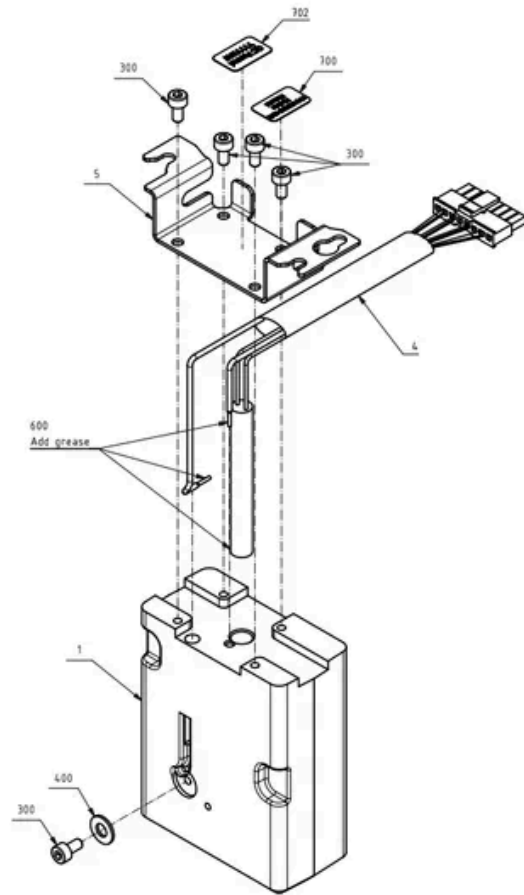
Fig. 1

3. Pre-heater

Drawing No.: 60086467 | **Page:** 110-1

Pos.	Part No.	Description	Prod. No.
4	60081085	Heating Cartridge and NTC cpl	

(See Fig. 2)



600647 Doc. Rev 01 Doc Type 70

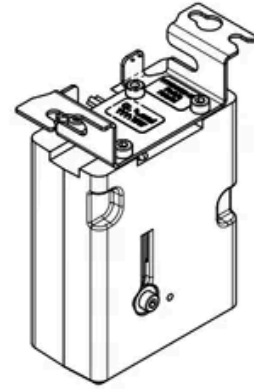


Fig. 2

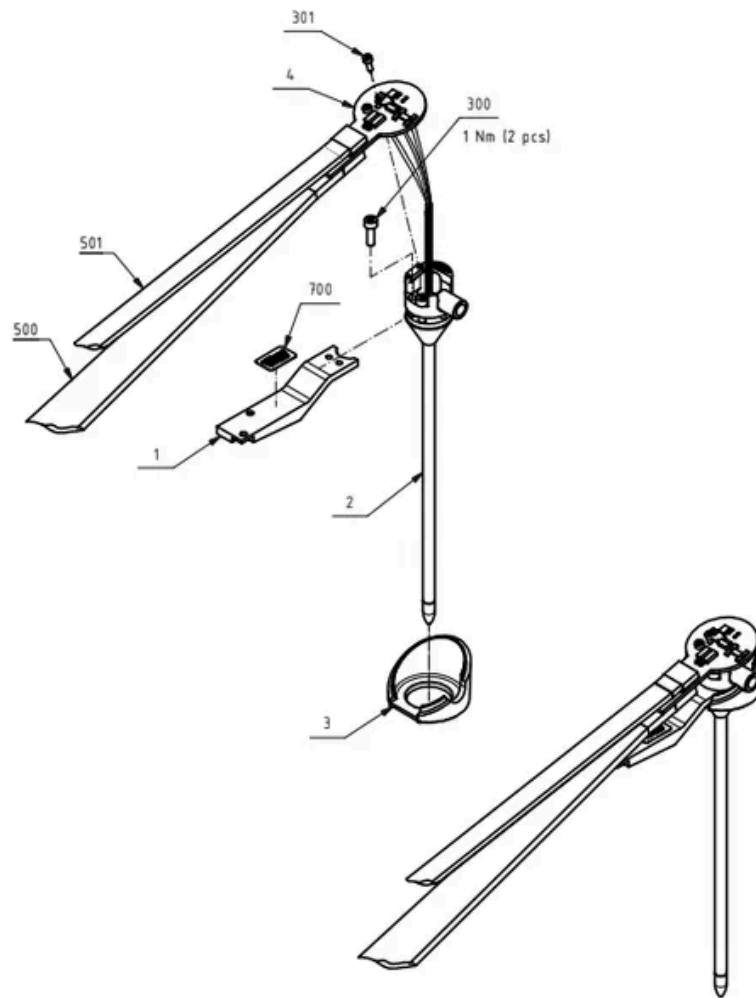
Fig. 2

4. Sample Pipette - Sample Intake Mod

Drawing No.: 60073632 | Page: 200-1

Pos.	Part No.	Description	Prod. No.
3	60071292	Pipette Light Guide - Sample Pipette Mod	

(See Fig. 3)



60073632 Doc. Rev 10 Doc.Type 95

200

Fig. 3

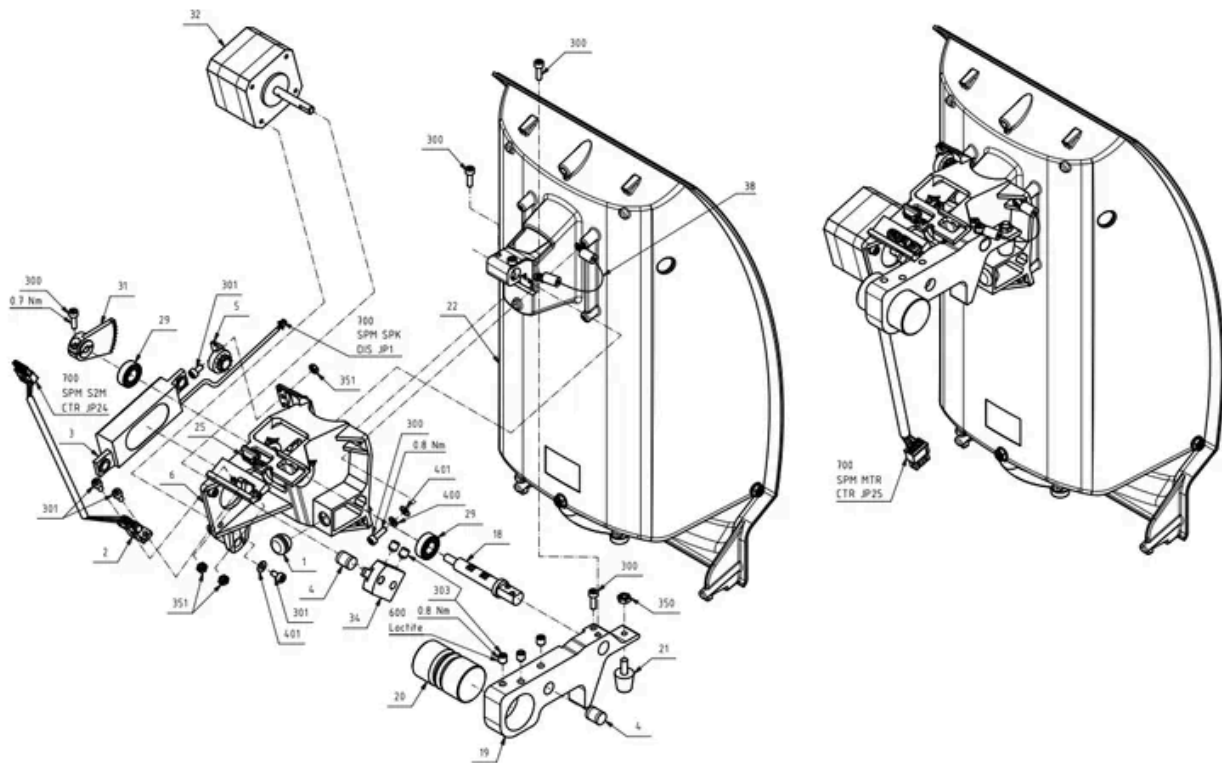
Fig. 3

5. Sample Pipette Mod - Main Assy

Drawing No.: 60071249 | Page: 210-1

Pos.	Part No.	Description	Prod. No.
2	60079612	Sensor optical switch fork for pipette c	
3	60064537	Miniature Speaker 8 Ohm, wire L=180mm	
5	60040345	Lid dampers	
15	00208538	O-ring	
18	60071294	Shaft For Pipette Rotation - Sample Inta	
21	60034902	Vibrationdamper	
31	60075728	Spur Gear m=0.8, for pipette rot mech	
32	60080240	Pipette Motor Cpl.	

(See Fig. 4)



6007045 Doc. Rev. 10 Dec Page 10

210-1

Fig. 4

Fig. 4

6. Sample Pipette Mod - Main Assy (cont.)

Drawing No.: 60071249 | Page: 210-2

Pos.	Part No.	Description	Prod. No.
26	60093006	Sample Pipette Assy - Sample Intake Mod	60073632
30	60077361	Waste Funnel - Sample Intake	
A	60073182	Sample holder platform with holes placed	

Note: For installation this part is located in 60084298 FOSS Inst.Kit. MilkoScan FT3.

(See Fig. 5)

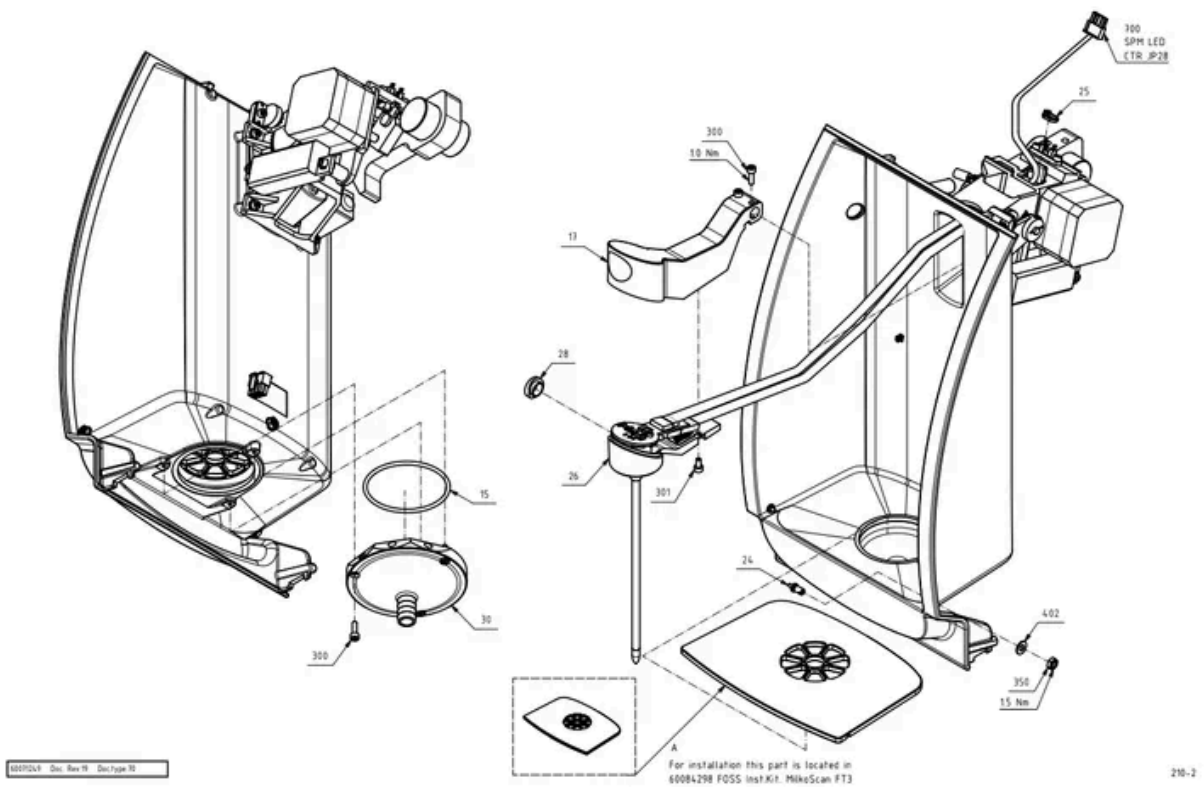


Fig. 5

Fig. 5

7. System Pipette Mod

Pos.	Part No.	Description	Prod. No.
4	60073622	Liquid Sensor Cpl - System Pipette Assy	
6	00039388	Spring	
500	60077482	Cable ERNI SMC 12Pin 300mm	
501	60080569	Cable ERNI PVC (awg26) 4pin 300mm	
502	60088654	Cable Blade 6.3 F/Ring M3 1x22 L100 blk	

(See Fig. 6)

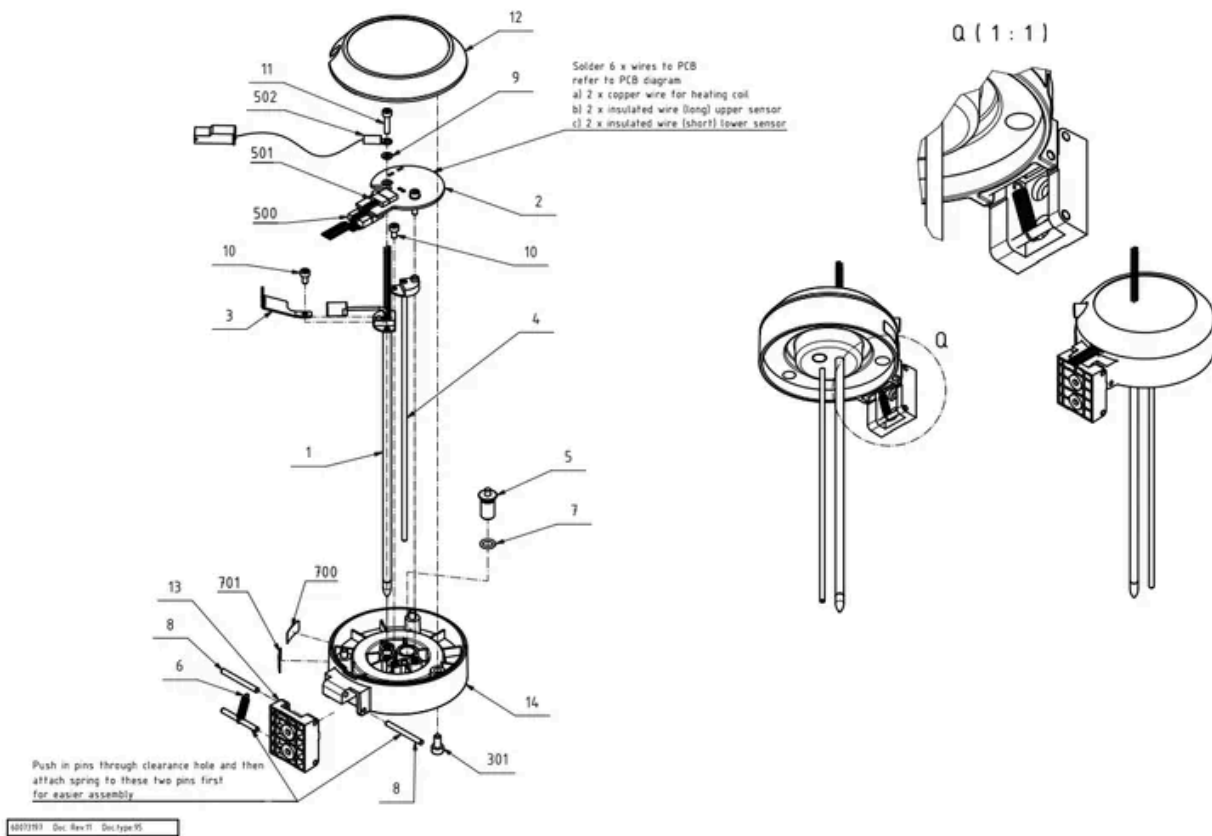


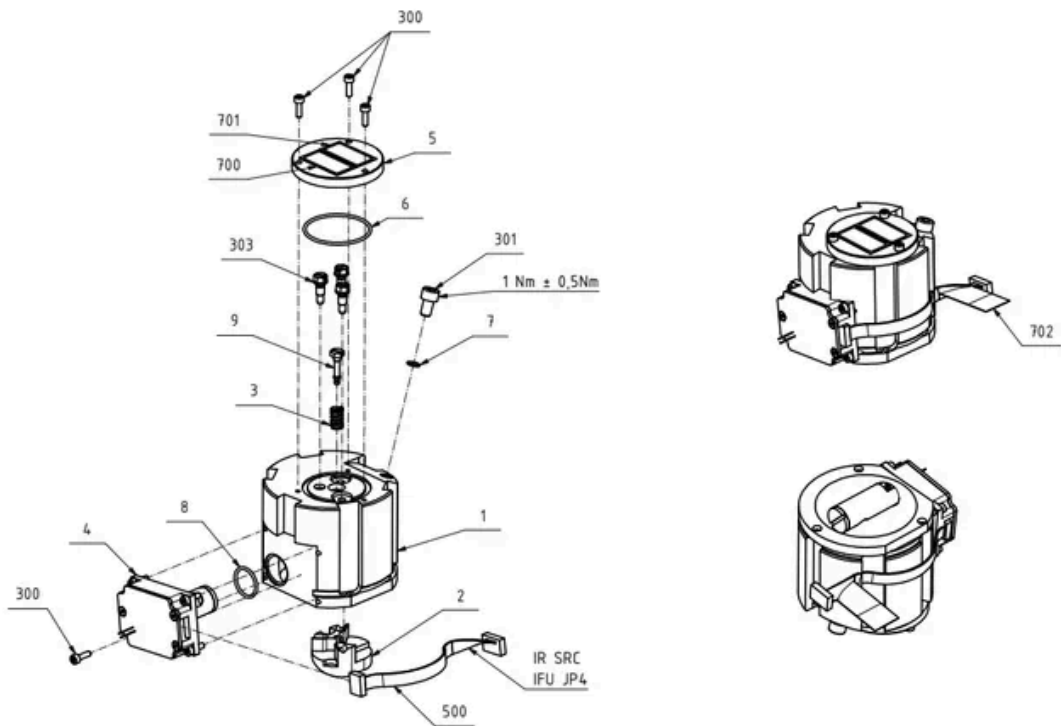
Fig. 6

Fig. 6

8. IR-source

Pos.	Part No.	Description	Prod. No.
4	60073905	IR source Irma	
8	00209452	O-ring	
500	60071333	Cable Erni SMC 12P F/F 12×30 L150	

(See Fig. 7)



60073908 Doc. Rev 10 DocType 95

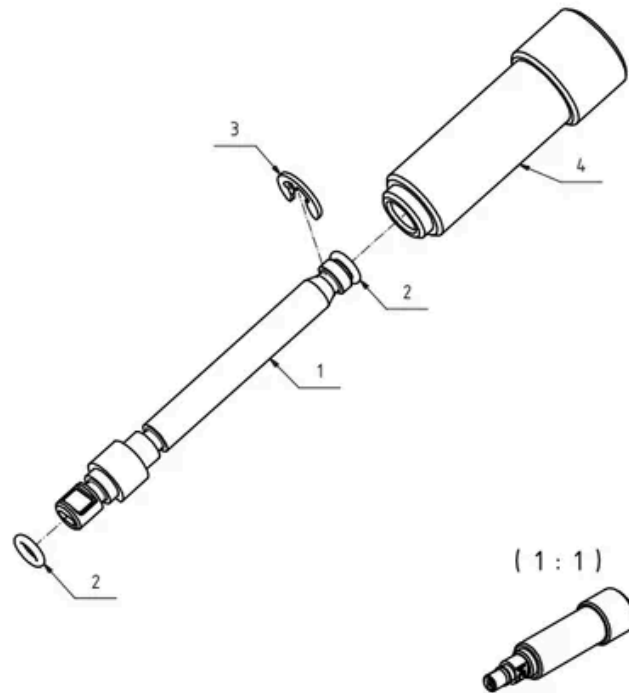
Fig. 7

Fig. 7

9. Filterstick for IFU Manifold 24 µm

Pos.	Part No.	Description	Prod. No.
2	60015107	O-ring Ø003.00xØ1.00	

(See Fig. 8)



60070544 Doc. Rev.05 Doc. type:70

520

Fig. 8

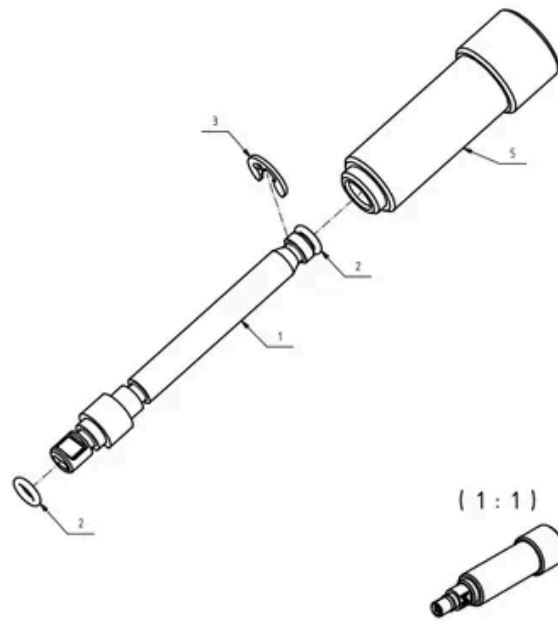
Fig. 8

10. Filterstick for IFU Manifold 34 µm

Drawing No.: 60070544 | Page: 530-1

Pos.	Part No.	Description	Prod. No.
2	60015107	O-ring Ø003.00xØ1.00	

(See Fig. 9)



6007044 Doc. Rev. 01 Doc. Type 3D

530

Fig. 9

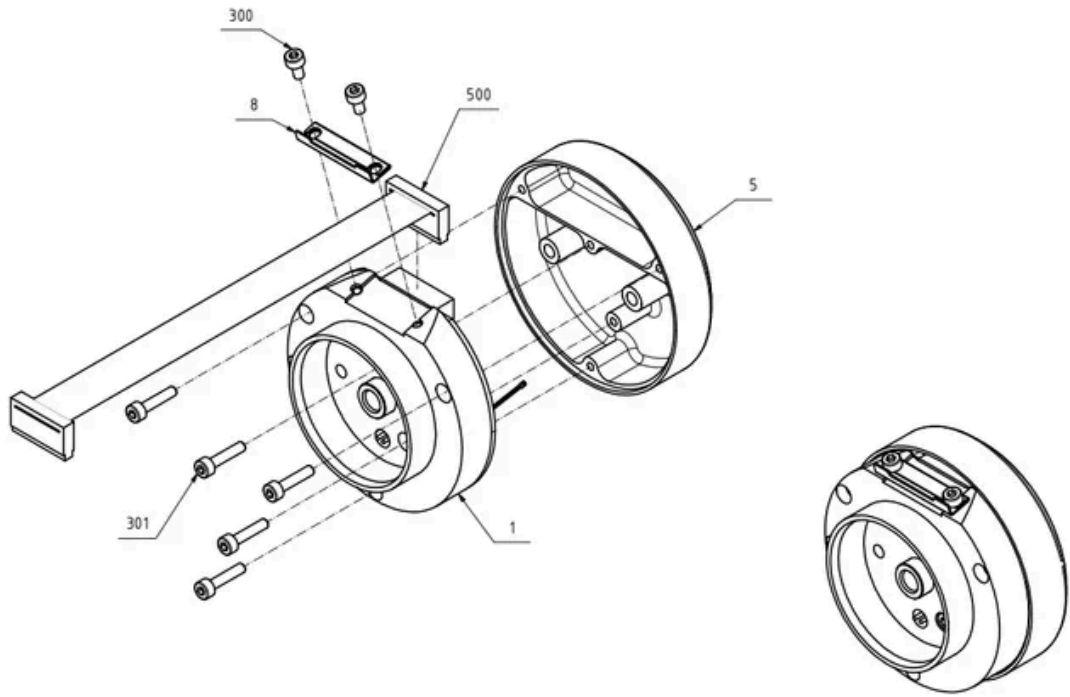
Fig. 9

11. Detector

Drawing No.: 60070995 | Page: 540-1

Pos.	Part No.	Description	Prod. No.
1	60093007	Detector cpl	60076967
5	60070130	Detector PCB Lid	
500	60077478	Cable Erni SMC 26P F/F 26×26 L160	

(See Fig. 10)



60071578 Doc. Rev. 12 DocType 05

Fig. 10

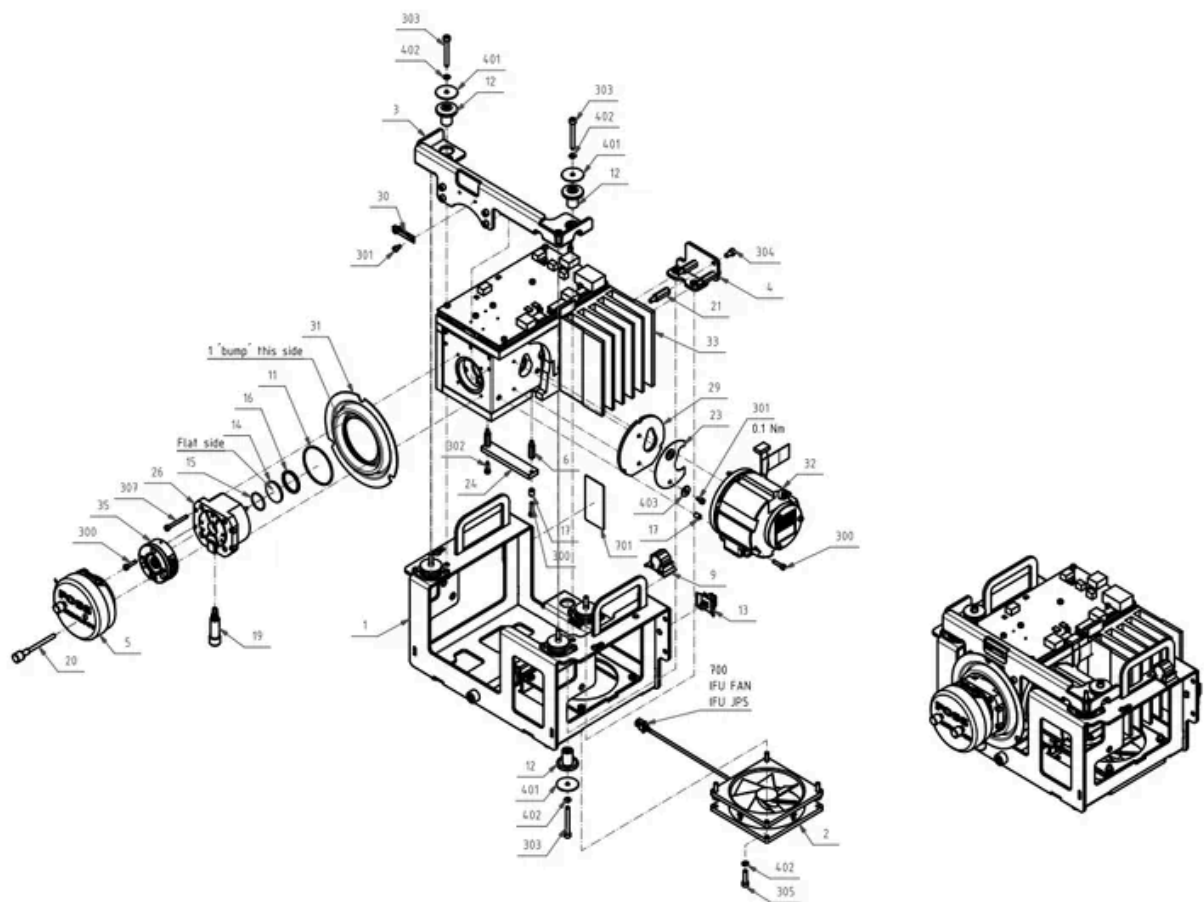
Fig. 10

12. IF Unit Main

Drawing No.: 60071578 | Page: 550-1

Pos.	Part No.	Description	Prod. No.
19	60070021	Filterstick for IFU Manifold 34µm	60070544
20	60070134	Fingerscrew for Ø4	
26	60084455	IFU manifold	
31	60072743	Bulkhead IFU Gasket - Main Assy	
32	60093008	IR-source assy	60073908
33	60084840	LEDA2 IFU	60072810
33-4a	01052263	Pcb assy IFU Control PCB	
33-14-21	01052305	Pcb assy Thermobox Heater PCB	
35	60092630	Cuvette MilkoScan FT3 assy	60084456

(See Fig. 11)



60070544 Doc. Rev 20 Doc. Type 95

Fig. 11

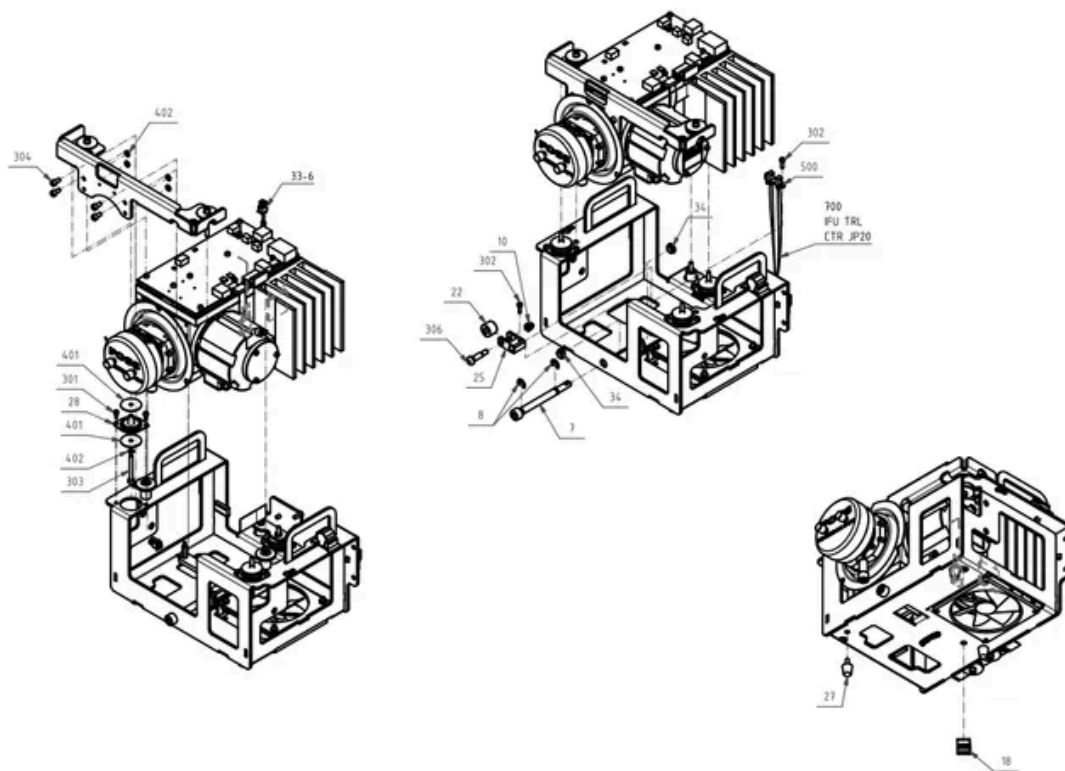
Fig. 11

13. IF Unit Main (cont.)

Drawing No.: 60071578 | Page: 550-2

Pos.	Part No.	Description	Prod. No.
28	60075011	Damper Lord mount	
33-6	60078531	IFU Dryer Cable	
500	60080871	Sensor optical switch fork cpl	

(See Fig. 12)



60071578 Doc. Rev.20 Doc.Type:PS

550-2

Fig. 12

14. BPV Mod Main

Pos.	Part No.	Description	Prod. No.
4	60071155	Valve solenoid 2/2 NC 24V Bürkert	
6	60053831	Membrane	
11	60087522	BPV Manifold Cpl	
A	60093500	Motor step Kit for BPV	

(See Fig. 13)

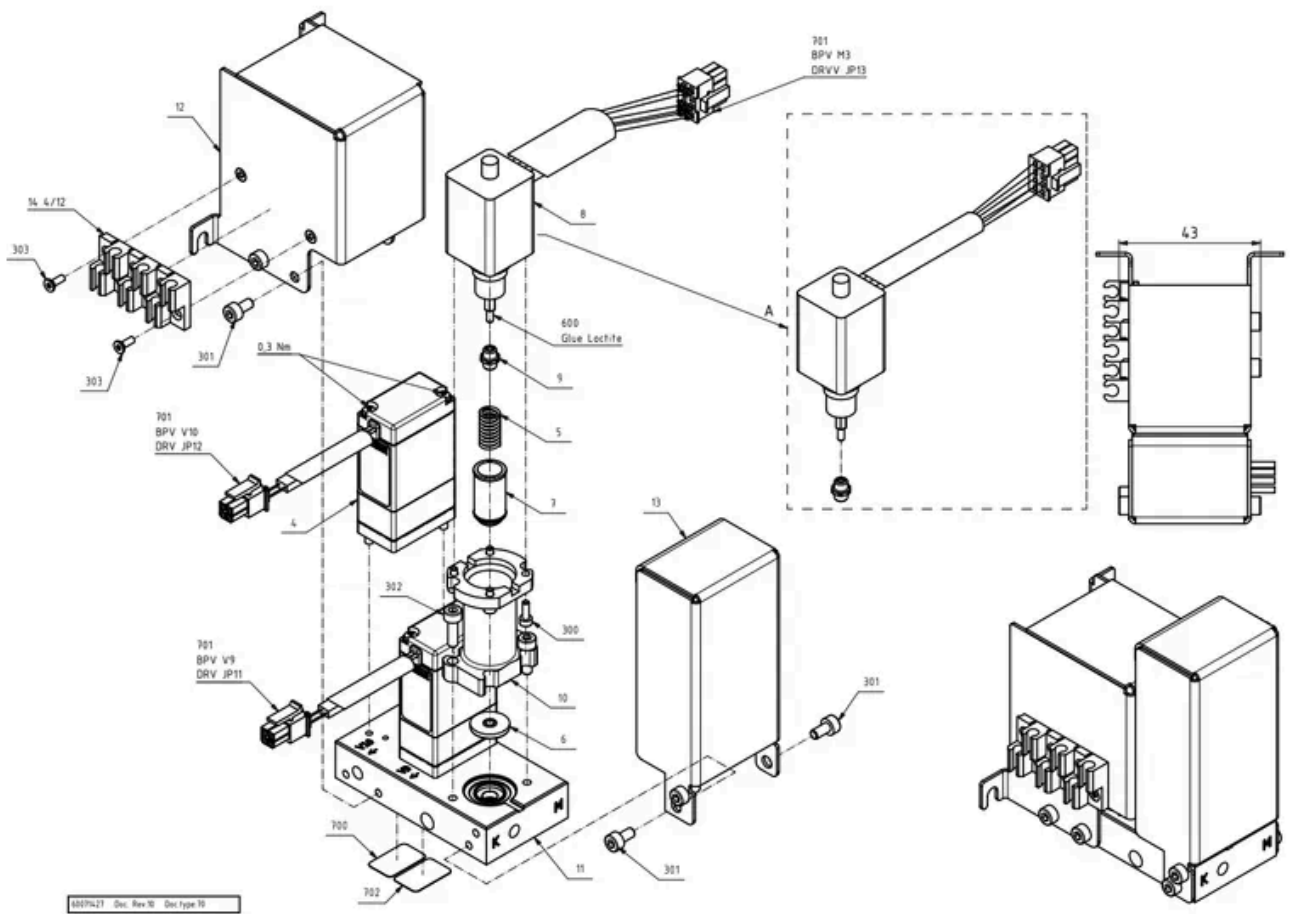


Fig. 13

Fig. 13

15. M2 Pump Mod - Main Assy

Pos.	Part No.	Description	Prod. No.
1	60071155	Valve solenoid 2/2 NC 24V Bürkert	
9	60093009	Pressure Sensor Ø11, 0-30 bar (abs) Cpl	60077108
10	60079419	Heating cartridge Ø6.5×50mm 24V/55W cpl	
11	60090139	Motor step 43×43 mm, Screw L=2 in cpl	
A	60092440	Repair kit for piston pump	

(See Fig. 14)

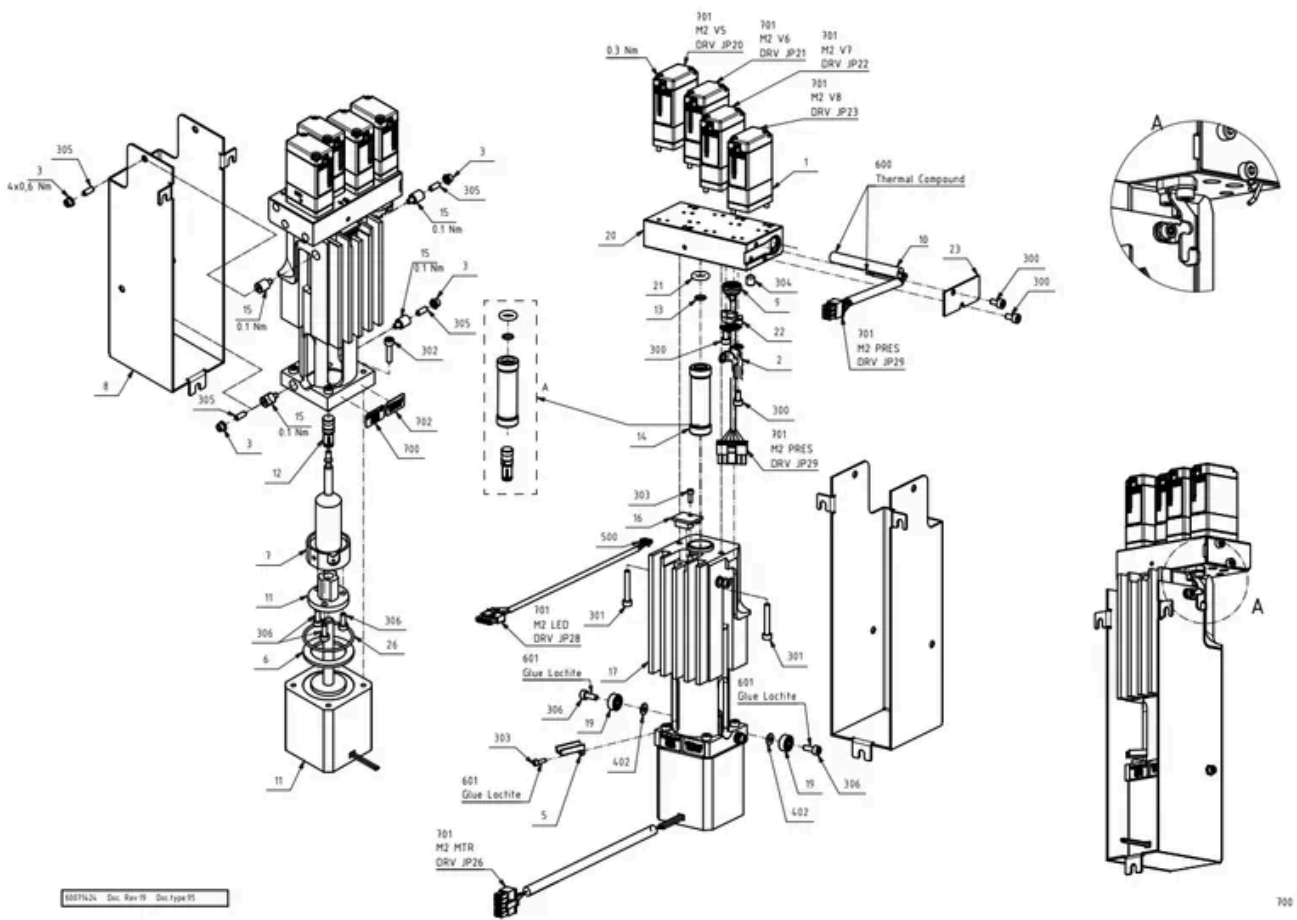


Fig. 14

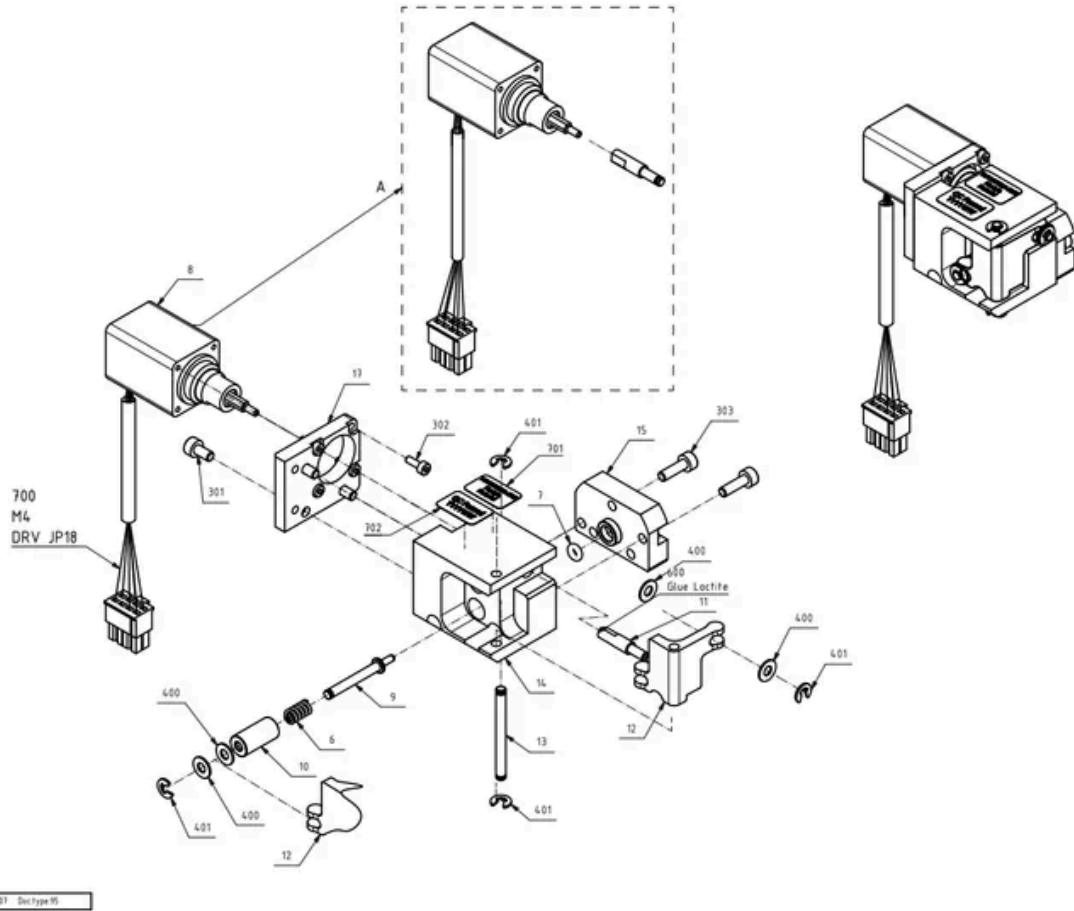
Fig. 14

16. H-stage

Drawing No.: 60085620 | Page: 800-1

Pos.	Part No.	Description	Prod. No.
15	60085631	Inner Housing w/ball - H-stage Cpl	
A	60093501	Motor step Kit for H-stage	

(See Fig. 15)



60085631 Dec Rev 01 Dec Type 95

Fig. 15

Fig. 15

17. M1 Pump Mod - Main Assy

Drawing No.: 60071426 | Page: 810-1

Pos.	Part No.	Description	Prod. No.
8	60091950	H-stage	60085620
10	60093009	Pressure Sensor Ø11, 0-30 bar (abs) Cpl	60077108
11	60079419	Heating cartridge Ø6.5×50mm 24V/55W cpl	
12	60090139	Motor step 43×43mm, Screw L=2 in cpl	
15	01052233	Pcb assy Pipette Light PCB	
18	60015423	O-ring Ø002.50xØ1.00	
21	60050165	O-ring Ø011.50xØ1.00 EPDM	
22	60086575	Valve solenoid 2/2 NC 24V Bürkert Ø0.8 H	
24	60044049	O-ring Ø004.00xØ2.00 Viton 75 sh	
27	60083598	Pressure Sensor Retainer	
500	60078475	Cable manifold light	
A	60092440	Repair kit for piston pump	

(See Fig. 16)

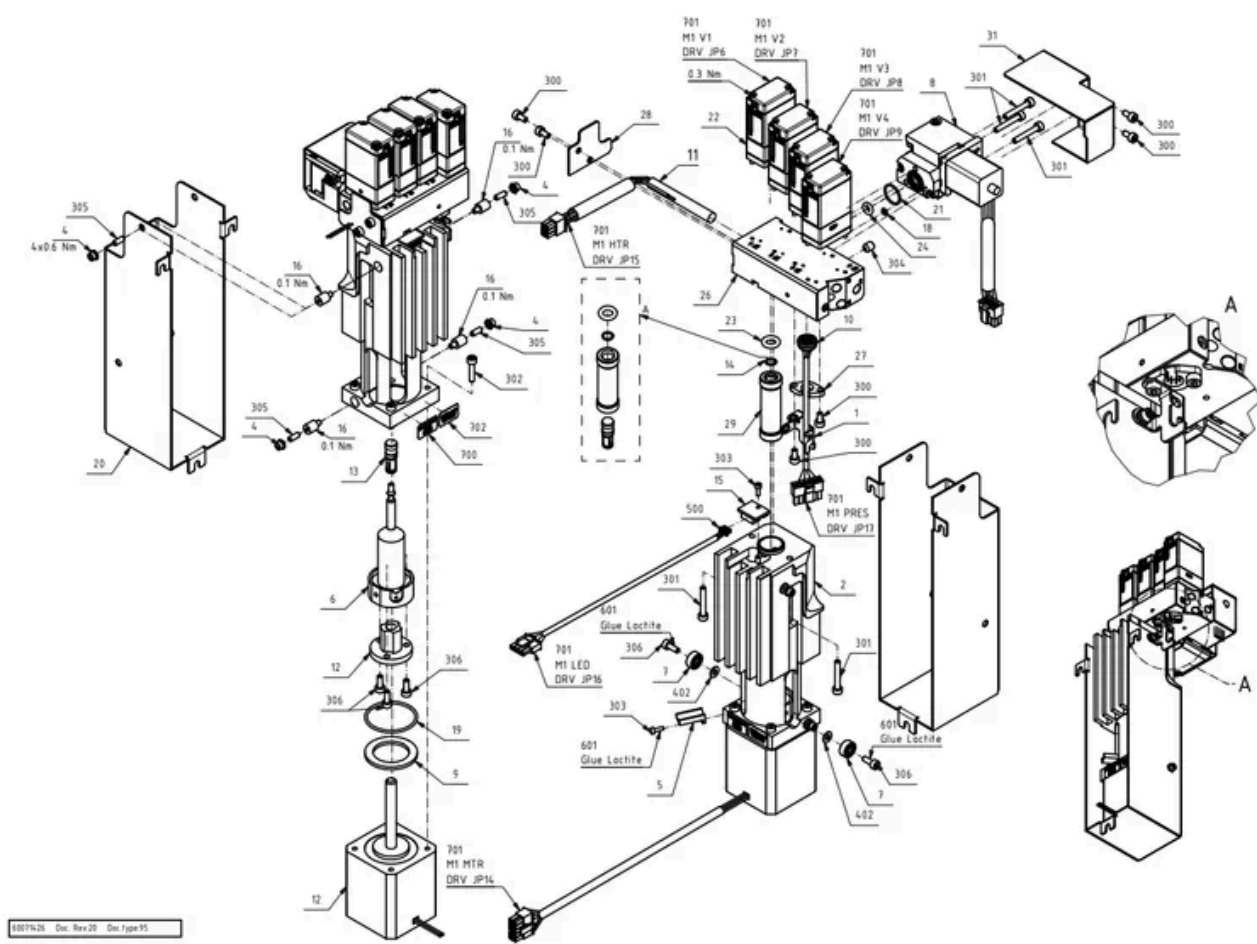


Fig. 16

Fig. 16

18. CTR Mod - Main Assy

Drawing No.: 60072623 | Page: 900-1

Pos.	Part No.	Description	Prod. No.
1	60078314	Fan Axial 92×92×25 3414 cpl	
7	60090830	Power Supply	60088699
23	01052407	Pcb assy NAT ZYNQ PCB	
26	01052347	Pcb Control PCB	
500	60078537	Power cable 24V Control PCB	
501	60078516	Cable Blade 6.3 F/Ring M3 1×16 L130 y/g	
502	60078517	Cable Blade 6.3 F/F 1×20 L200 y/g	
503	60078508	Cable Blade 6.3 F/Ring M3 1×18 L130 Brn	
504	60078519	Cable Blade 6.3 F/F 1×18 L170 blu	
505	60078530	Cable Blade 6.3 F/F 1×18 L170 Brn	
506	60078507	Cable Blade 6.3 F/Ring M3 1×18 L130 Blu	

(See Fig. 17)

Pos.	Part No.	Description	Prod. No.
1-7	60084479	Flange Head Bolt, M4×20, ISO 7380-2, A2	
1-9	00182782	Washer	
1-10	60078539	Gas Spring Ø6 - Stabilus	
1-12	60079472	Damper Foot	
1-19	60071790	Front Hatch Cpl - Basic Cabinet Assy	60045881
1-20	60073494	Top Hatch Cpl - Basic Cabinet Assy	
1-21	60078383	Gas Spring Connector	
1-22	60090207	Flange Head Bolt, M4×8 ISO 7380-2 A2	
1-23	60076302	Top lid seal short	
7	60091949	Display Mod - Main Assy	60073326
8	60070022	System Pipette Mod	60073197
10	60086467	Pre-heater assy	
12	60078314	Fan Axial 92×92×25 3414 cpl	
48	60065855	Holder for tube Ø4.0 12 pos. PP black	
703	60075782	Label Clean Liquid	
704	60075783	Label Zero Liquid	

(See Fig. 18)

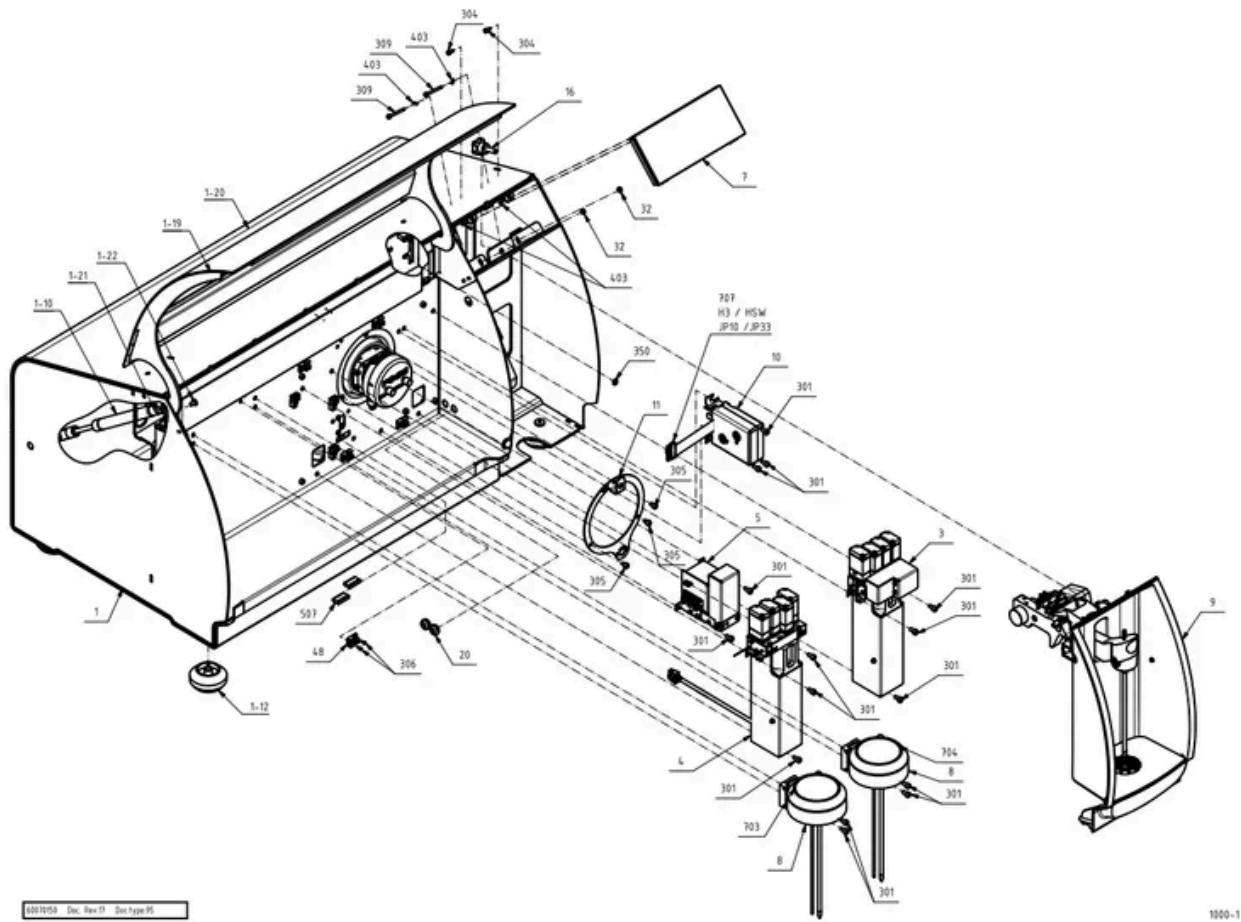


Fig. 18

Fig. 18

20. Main Unit (cont.)

Drawing No.: 60070150 | Page: 1000-2

Pos.	Part No.	Description	Prod. No.
13	60078510	Fan Centrifugal 135×135×38 24VDC	
15	60078940	Damper, pneumatic	
28	01052349	Pcb assy Driver Connection PCB	00584698
29	60048004	Chassis ID	

(See Fig. 19)

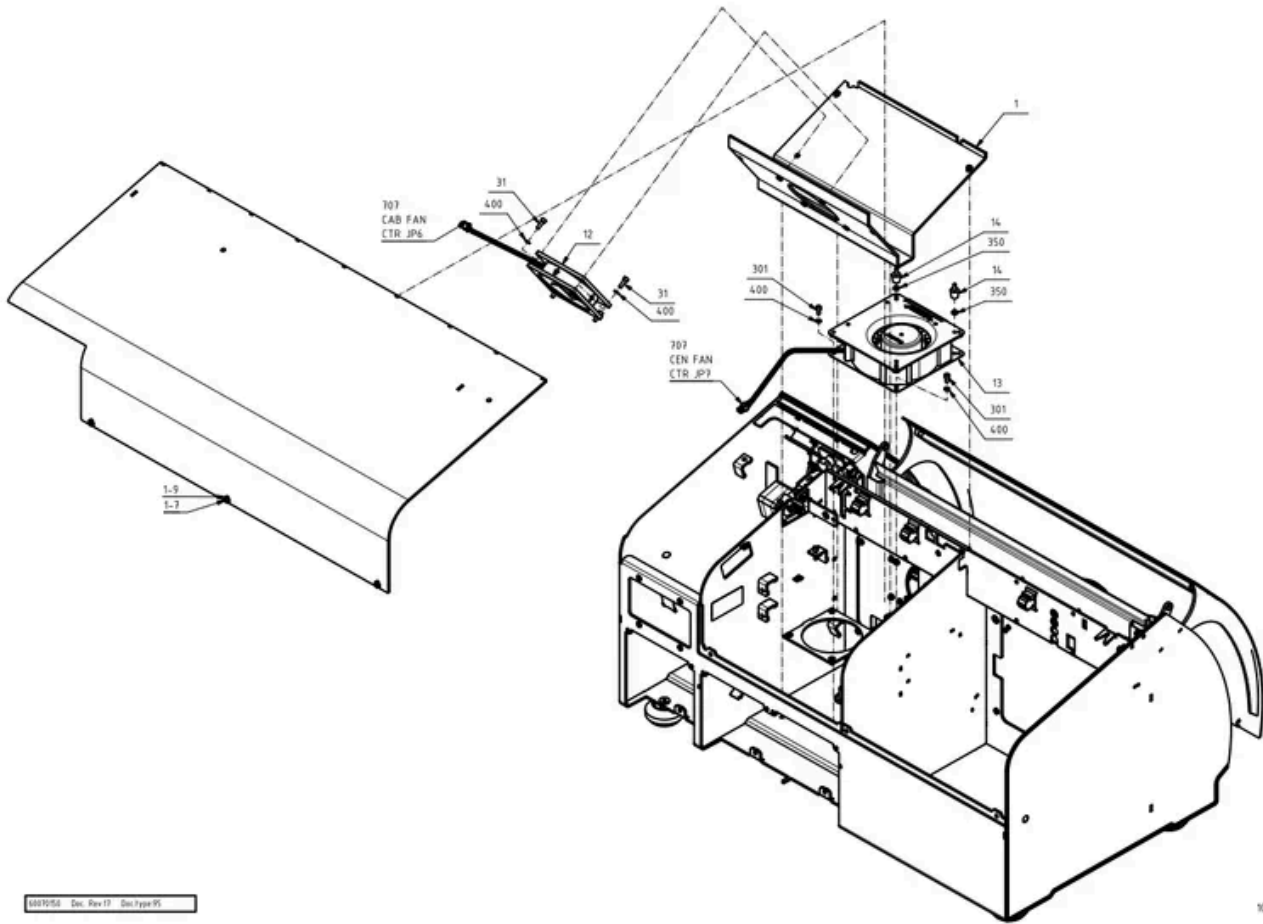


Fig. 20

Fig. 20

22. Main Unit - Tube Diagram

Drawing No.: 60070150 | Page: 1000-4

Pos.	Part No.	Description	Prod. No.
26	60091427	Tube Ø01.59/Ø03.18 PTFE L=0145 assy	
35	60091424	Tube Ø01.00/Ø01.59 PTFE L=075 assy	
50	60086446	Tube Ø01.59/Ø03.18 PTFE L=0300 assy	
51	60088416	Tube Ø01.00/Ø01.59 PTFE L=0130 assy	
52	60074456	Tube Ø01.00/Ø01.59 PTFE L=0090 assy	
53	60074464	Tube Ø01.59/Ø03.18 PTFE L=0725 assy	
54	60075536	Tube Ø01.59/Ø03.18 PTFE L=0415 assy	
55	60074458	Tube Ø01.59/Ø03.18 PTFE L=0255 assy	
56	60070955	Tube Ø01.59/Ø03.18 PTFE L=0130 assy	

(See Fig. 21)

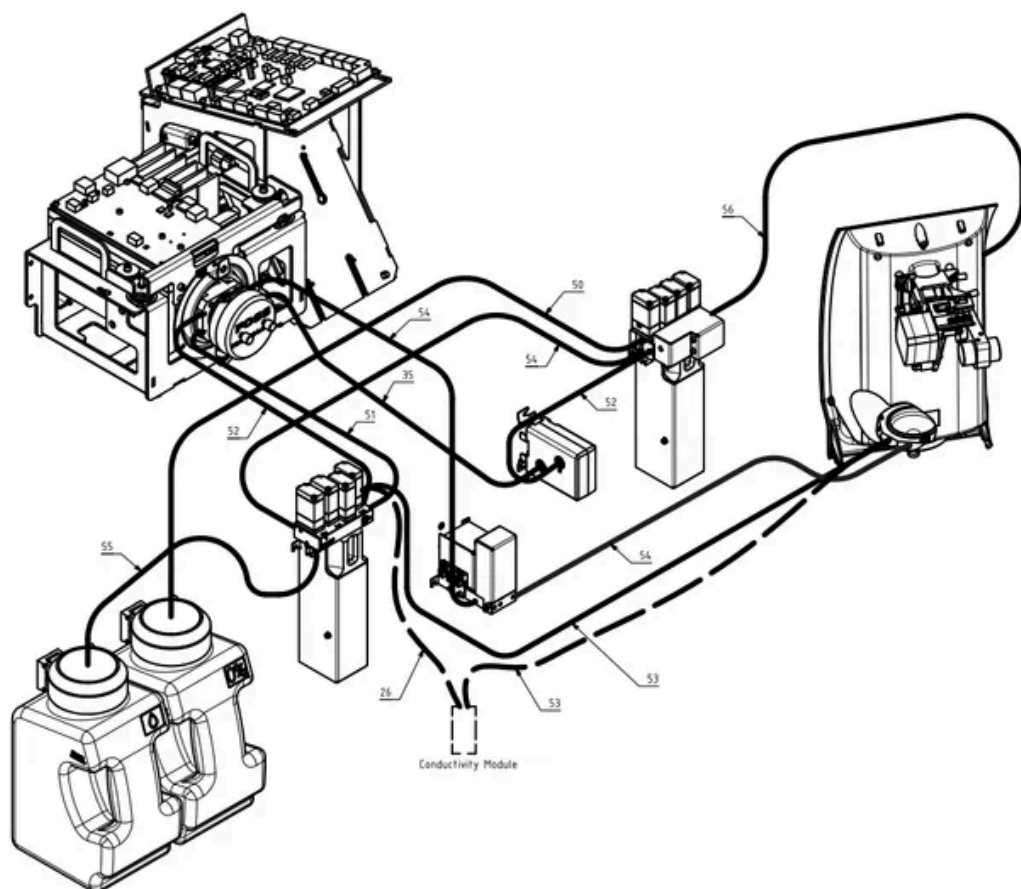


Fig. 21

Fig. 21

22.1 Tube Dimensions and Materials Reference

ID	Dimensions and Material	Material #
B	Ø1.59/3.18 × 130 PTFE	60070955
C	Ø1.00/1.59 × 105 PTFE	60074456
D	Ø1.59/3.18 × 300 PTFE	60086446
E	Ø1.59/3.18 × 415 PTFE	60075536
F	Ø1.00/1.59 × 130 PTFE	60088416
G	Ø1.59/3.18 × 725 PTFE	60074464
GC	Ø1.59/3.18 × 145 PTFE	60091427
H	Ø1.00/1.59 × 105 PTFE	60074456
I	Ø1.59/3.18 × 255 PTFE	60074458
J	Ø1.00/1.59 × 075 PTFE	60091424
K	Ø1.59/3.18 × 415 PTFE	60075536
M	Ø1.59/3.18 × 415 PTFE	60075536
Z	Ø8.0/Ø16.0 x 850 Silicone	60078292

(See Fig. 24)

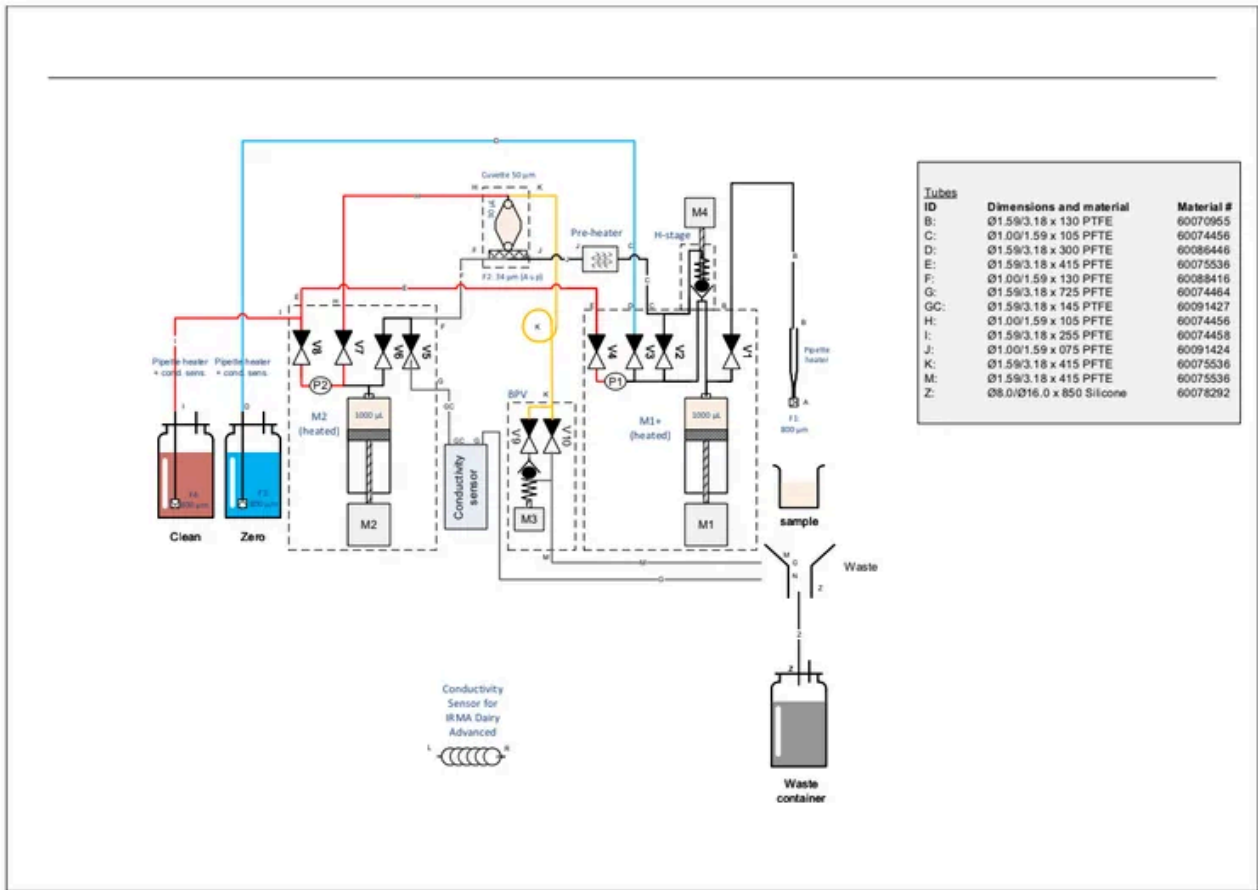


Fig. 24

Fig. 24

23. Main Unit - Connection Diagram

Drawing No.: 60070150 | Page: 1000-6

Pos.	Part No.	Description	Prod. No.
501	60081489	Cable Power Control/Driver L=0800 8 UL	
502	60093452	Ethernet cable 1:1 SF/FTP CAT.6 CMX	
503	60081519	Cable Minibridge 8P F/F 8×26 L620	

(See Fig. 23)

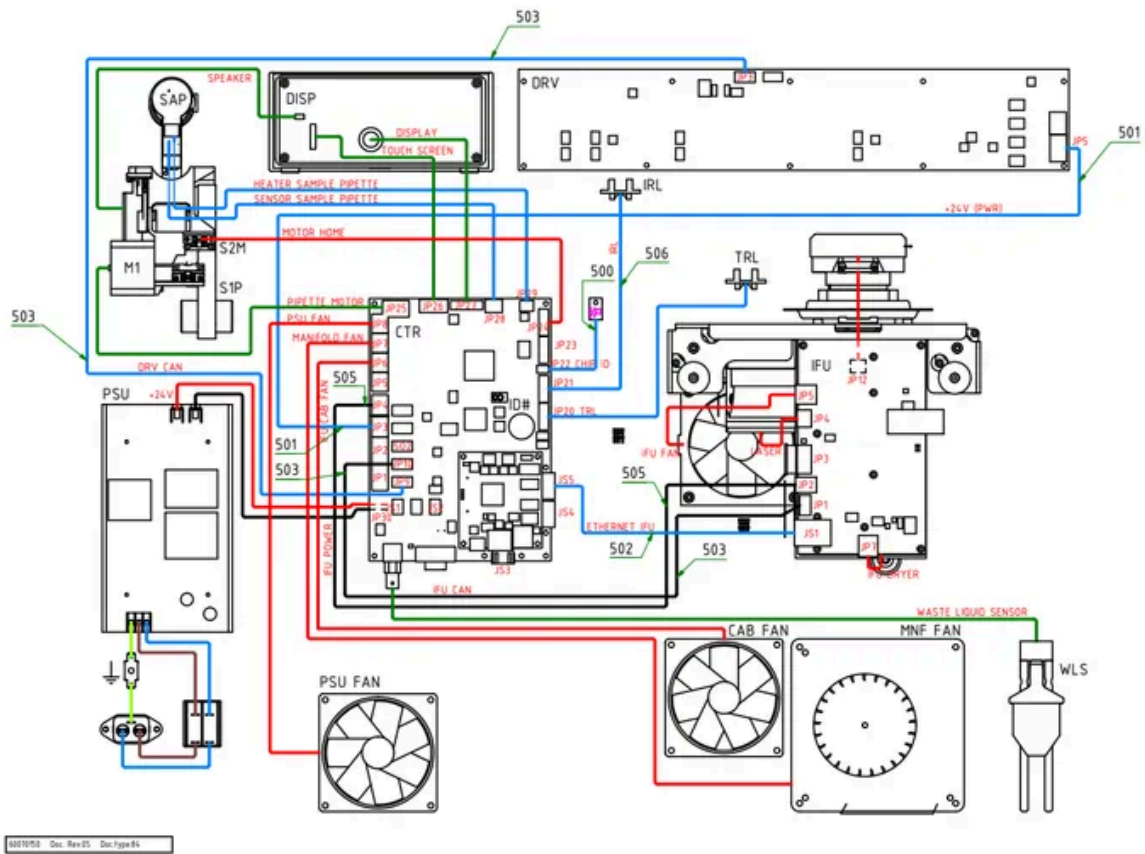


Fig. 23

Fig. 23

24. Basic Unit with Conductivity Module

Drawing No.: 60093239 | Page: 1100-1

Pos.	Part No.	Description	Prod. No.
2	60092766	FT3 Conductivity Module bdl	60092345

(See Fig. 25)

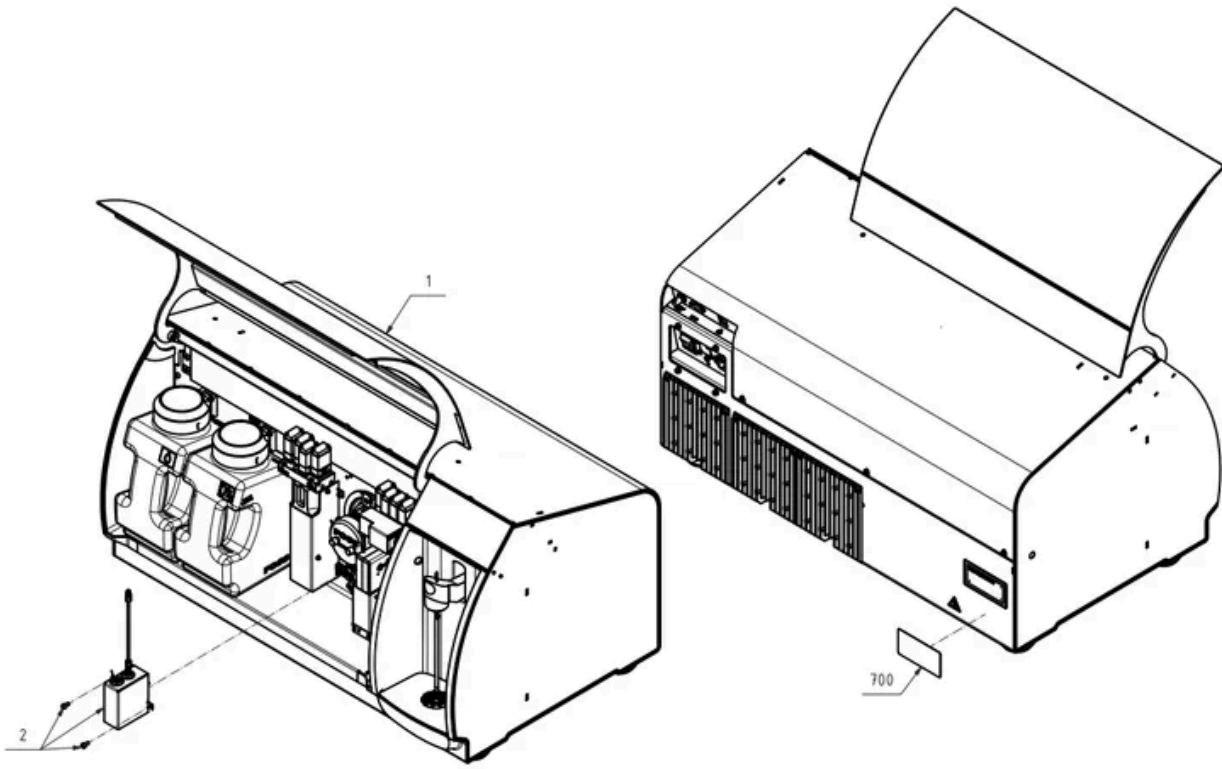


Fig. 25

Fig. 25

25. Index

Part No.	Page(s)
00039388	2, 4
00182782	36
00208538	8
00539056	12
01052233	32
01052263	22
01052305	22
01052347	34
01052349	38
01052407	34
60015107	16, 18
60015423	32
60034902	8
60040345	8
60044049	32
60048004	38
60048020	40
60050165	32
60053831	26
60064537	8
60065855	36
60070021	22
60070022	36
60070130	20
60070134	22

Part No.	Page(s)
60070955	42
60071155	26, 28
60071292	6
60071294	8
60071333	14
60071790	36
60072743	22
60073182	10
60073494	36
60073905	14
60074456	42
60074458	42
60074464	42
60075011	24
60075536	42
60075728	8
60075782	36
60075783	36
60076302	36
60077361	10
60077478	20
60078314	34, 36
60078383	36
60078475	32
60078507	34

Part No.	Page(s)
60078508	34
60078510	38
60078516	34
60078517	34
60078519	34
60078530	34
60078531	24
60078537	34
60078539	36
60078940	38
60079419	28, 32
60079472	36
60079612	8
60080240	8
60080871	24
60081489	46
60081519	46
60083598	32
60084455	22
60084479	36
60084840	22
60086446	42
60086467	36
60086575	32
60087522	26

Part No.	Page(s)
60088416	42
60090139	28, 32
60090207	36
60090830	34
60091424	42
60091427	42
60091949	36
60091950	32
60092440	28, 32
60092630	22
60092766	50
60093006	10
60093007	20
60093008	22
60093009	28, 32
60093452	46
60093500	26

 [SP60085771r4.docx](#)



2. Introduction

PROPRIETARY
OF FOSS

X On Site Maintenance	
<input type="checkbox"/> Remote Maintenance	
PM Interval	12 Months
PM Kit (P/N)	6010 9491
Valid From	2026-01-15
Additional P/N need	1 × 6009 3021 (FTIR Performance Standard 753)
Instrument Serial No.:	
No. of Samples Analyzed:	
Date:	

A maintenance protocol provides a systematic and effective approach to ensure the reliable operation of a specific instrument type. The recommended Preventive Maintenance (PM) interval depends on operational conditions and is guided by our extensive experience in manufacturing and servicing analytical instruments.

In addition to sample throughput, environmental factors must also be taken into account. Challenging conditions - such as elevated ambient temperatures, high humidity, or excessive dust - can significantly reduce component lifetimes and shorten both maintenance and replacement intervals.

The maintenance frequency of the MilkoScan™ FT3 is provided in the table above.

2.1. Maintenance Procedures

1. Pre-verification of Instrument before PM replacement

See the procedure in the Service Manual (SM 6008 5772 chapter 3.3.3):

No.	Instrument Performance Test	OK
1	Perform the Instrument Verification before the PM starts	<input type="checkbox"/>
2	Perform a Clean and a Zero Setting	<input type="checkbox"/>
Time required		0.2 hour

Table 1 - Pre-verification

2. Removal and Replacement

See the Spare Parts Manual (SP 6008 5771) and procedure in the Service Manual (SM 6008 5772 chapter 3.3.4):

Part / Module	Page / Pos	Action	Qty	P/N	OK
Membrane, ø12 for Back Pressure Valve	23/6	Replace	1	6005 3831	<input type="checkbox"/>
Cuvette MilkoScan FT3 SP (in plastic box)	20/3 5	Replace/ Hand over	1	6010 0192	<input type="checkbox"/>
O-ring Ø003.00xØ1.00 for Inline Filter	20/2	Replace	1	6001 5107	<input type="checkbox"/>
Inline Filter, Mesh Filter	20	Check/ve rify	1		<input type="checkbox"/>
O-ring ø002.50/ø1.00 FPM 80	30/18	Replace	1	6001 5423	<input type="checkbox"/>
O-ring ø003.70xø1.20 FPM 70	30/17	Replace	1	6010 9865	<input type="checkbox"/>
Tube ø1/8"/ø01.60 PTFE L=0130mm assy	40/5 6	Replace	1	6007 0955	<input type="checkbox"/>
Tube ø01.59/ø03.18 PTFE L=0725 assy	40/5 3	Replace	1	6007 4464	<input type="checkbox"/>
Tube Ø01.59/Ø03.18 PTFE L=0415 assy	40/5 4	Replace	1	6007 5536	<input type="checkbox"/>
Tube ø01.59/ø03,18 PTFE L=0145 assy 1	40/5 50	Replace	1	6009 1427	<input type="checkbox"/>
Tube øø 008/016 Silicone as Waste tube	6/4	Replace	1	6007 8292	<input type="checkbox"/>
Repair Kit Syringe Piston Tip	30/B	Replace	1	6010 8261	<input type="checkbox"/>
Motor step 43×43mm, Screw L=2 in cpl 2	30/12	Grease	2	6009 0139	<input type="checkbox"/>

Part / Module	Page / Pos	Action	Qty	P/N	OK
Repair Kit Valve Flow house ø0.8, FKM	30/2 2	Replace	2	6010 9532	<input type="checkbox"/>
Repair Kit Syringe Piston Tip	26/B	Replace	1	6010 8261	<input type="checkbox"/>
Motor step 43×43mm, Screw L=2 in cpl 2	26/11	Grease	2	6009 0139	<input type="checkbox"/>
Repair Kit Valve Flow house ø1.2, FKM	26/B	Replace	1	6010 9531	<input type="checkbox"/>
Label sheet, Clean and Zero for Container Lids and Containers		Replace	1	6008 8049	<input type="checkbox"/>
Time required					3 hours

Table 2 - Remove/Replace

1. Only if instrument is equipped with Conductivity Module
2. Motor Spindle should be lightly greased with Kryton 206 (P/N 6007 9634 Lubricant 57 g).

3. Post-verification of Instrument after PM

See the procedure in the Service Manual (SM 6008 5772 chapter 3.3.5):

No.	Instrument Performance Test	Batch number	OK
1	Perform the Instrument Verification by the end of PM		<input type="checkbox"/>
2	Perform a Clean and a Zero Setting	N/A	<input type="checkbox"/>
Time required			0.2 hour

Table 3 - Post-verification

4. Instrument Check

See the procedure in the Service Manual (SM 6008 5772 chapter 3.3.6):

No	Action	OK
.		
1	Check Diagnostic center for any detected events (no events accepted)	<input type="checkbox"/>
2	Check (view log) and create an "event log report" in Instrument performance reports	<input type="checkbox"/>
3	Perform "Back up the entire database"	<input type="checkbox"/>
4	Perform "Clean up data"	<input type="checkbox"/>
5	Redo "Back up the entire database"	<input type="checkbox"/>
6	Check "Flow system check" (no warnings/errors accepted)	<input type="checkbox"/>
7	Check "Sample pipette leak check" (no warnings/errors accepted)	<input type="checkbox"/>
8	Check "IR system check - measure with no cuvette flow" (no warnings/errors accepted)	<input type="checkbox"/>
9	Check "Flow system leak diagnostic tool" (no warnings/errors accepted)	<input type="checkbox"/>
10	Export Wear log at "Save service data to file". Send to Global Help Desk	<input type="checkbox"/>
Time required		0.5 hour

Table 4 - Instrument Check

5. Software

See the procedure in the Service Manual (SM 6008 5772 chapter 3.3.7):

Action	Version Number	OK
Currently installed version of Nova		<input type="checkbox"/>
Perform an upgrade to the latest version (if needed)		<input type="checkbox"/>
Time required		0.5 hour

Table 5 - Software verification

6. Instrument Performance Verification

See the procedure in the Service Manual (SM 6008 5772 chapter 3.3.8):

No.	Instrument Performance Test	OK
1	Perform a Zero Setting	<input type="checkbox"/>
2	Perform a Clean and a Zero Setting	<input type="checkbox"/>
3	Repeatability test on homogenized whole milk	<input type="checkbox"/>
4	Carry over test	<input type="checkbox"/>
5	Volume check	<input type="checkbox"/>
6	Perform a Clean and a Zero	<input type="checkbox"/>
Time required		0.5 hour

Table 6 - Instrument verification

<p>Note: The total time is an approximate time. Depending on e.g. the current status and the accessibility of the instrument, this time might vary. Please round off to nearest quarter of an hour.</p>	<p>Total Time [Hours] 5</p>
--	--

Customer representative:	Signature:
FOSS representative:	Signature:

2.1.1. 1. Pre-verification of Instrument before PM replacement

See the procedure in the Service Manual (SM 6008 5772 chapter 3.3.3):

No.	Instrument Performance Test	OK
1	Perform the Instrument Verification before the PM starts	<input type="checkbox"/>
2	Perform a Clean and a Zero Setting	<input type="checkbox"/>
Time required		0.2 hour

Table 1 - Pre-verification

2.1.2. 2. Removal and Replacement

See the Spare Parts Manual (SP 6008 5771) and procedure in the Service Manual (SM 6008 5772 chapter 3.3.4):

Part / Module	Page / Pos	Action	Qty	P/N	OK
Membrane, ø12 for Back Pressure Valve	23/6	Replace	1	6005 3831	[]
Cuvette MilkoScan FT3 SP (in plastic box)	20/3 5	Replace/ Hand over	1	6010 0192	[]
O-ring Ø003.00xØ1.00 for Inline Filter	20/2	Replace	1	6001 5107	[]
Inline Filter, Mesh Filter	20	Check/ve rify	1		[]
O-ring ø002.50/ø1.00 FPM 80	30/18	Replace	1	6001 5423	[]
O-ring ø003.70xø1.20 FPM 70	30/17	Replace	1	6010 9865	[]
Tube ø1/8"/ø01.60 PTFE L=0130mm assy	40/5 6	Replace	1	6007 0955	[]
Tube ø01.59/ø03.18 PTFE L=0725 assy	40/5 3	Replace	1	6007 4464	[]
Tube Ø01.59/Ø03.18 PTFE L=0415 assy	40/5 4	Replace	1	6007 5536	[]
Tube ø01.59/ø03,18 PTFE L=0145 assy 1	40/5 50	Replace	1	6009 1427	[]
Tube øø 008/016 Silicone as Waste tube	6/4	Replace	1	6007 8292	[]
Repair Kit Syringe Piston Tip	30/B	Replace	1	6010 8261	[]
Motor step 43×43mm, Screw L=2 in cpl 2	30/12	Grease	2	6009 0139	[]

Part / Module	Page / Pos	Action	Qty	P/N	OK
Repair Kit Valve Flow house ø0.8, FKM	30/2 2	Replace	2	6010 9532	[]
Repair Kit Syringe Piston Tip	26/B	Replace	1	6010 8261	[]
Motor step 43×43mm, Screw L=2 in cpl 2	26/11	Grease	2	6009 0139	[]
Repair Kit Valve Flow house ø1.2, FKM	26/B	Replace	1	6010 9531	[]
Label sheet, Clean and Zero for Container Lids and Containers		Replace	1	6008 8049	[]
Time required					3 hours

Remove/Replace

1 - Only if instrument is equipped with Conductivity Module.

2 - Motor Spindle should be lightly greased with Kryton 206 (P/N 6007 9634 Lubricant 57 g).

2.1.3. 3. Post-verification of Instrument after PM

See the procedure in the Service Manual (SM 6008 5772 chapter 3.3.5):

No.	Instrument Performance Test	Batch number	OK
1	Perform the Instrument Verification by the end of PM		<input type="checkbox"/>
2	Perform a Clean and a Zero Setting	N/A	<input type="checkbox"/>
Time required			0.2 hour

Table 3 - Post-verification

2.1.4. 4. Instrument Check

See the procedure in the Service Manual (SM 6008 5772 chapter 3.3.6):

No	Action	OK
.		
1	Check Diagnostic center for any detected events (no events accepted)	<input type="checkbox"/>
2	Check (view log) and create an "event log report" in Instrument performance reports	<input type="checkbox"/>
3	Perform "Back up the entire database"	<input type="checkbox"/>
4	Perform "Clean up data"	<input type="checkbox"/>
5	Redo "Back up the entire database"	<input type="checkbox"/>
6	Check "Flow system check" (no warnings/errors accepted)	<input type="checkbox"/>
7	Check "Sample pipette leak check" (no warnings/errors accepted)	<input type="checkbox"/>
8	Check "IR system check - measure with no cuvette flow" (no warnings/errors accepted)	<input type="checkbox"/>
9	Check "Flow system leak diagnostic tool" (no warnings/errors accepted)	<input type="checkbox"/>
10	Export Wear log at "Save service data to file". Send to Global Help Desk	<input type="checkbox"/>
Time required		0.5 hour

Table 4 - Instrument Check

2.1.5. 5. Software

See the procedure in the Service Manual (SM 6008 5772 chapter 3.3.7):

Action	Version Number	OK
Currently installed version of Nova		<input type="checkbox"/>
Perform an upgrade to the latest version (if needed)		<input type="checkbox"/>
Time required		0.5 hour

Table 5 - *Software verification*

2.1.6. 6. Instrument Performance Verification

See the procedure in the Service Manual (SM 6008 5772 chapter 3.3.8):

No.	Instrument Performance Test	OK
1	Perform a Zero Setting	<input type="checkbox"/>
2	Perform a Clean and a Zero Setting	<input type="checkbox"/>
3	Repeatability test on homogenized whole milk	<input type="checkbox"/>
4	Carry over test	<input type="checkbox"/>
5	Volume check	<input type="checkbox"/>
6	Perform a Clean and a Zero	<input type="checkbox"/>
Time required		0.5 hour

Table 6 - Instrument verification

Note: The total time is an approximate time. Depending on e.g. the current status and the accessibility of the instrument, this time might vary. Please round off to nearest quarter of an hour.

**Total
Time
[Hours]**
5

3. **Maintenance Procedures (w/Index)**

3.1. 1. Pre-verification of Instrument before PM replacement

See the procedure in the Service Manual (SM 6008 5772 chapter 3.3.3):

No.	Instrument Performance Test	OK
1	Perform the Instrument Verification before the PM starts	<input type="checkbox"/>
2	Perform a Clean and a Zero Setting	<input type="checkbox"/>
Time required		0.2 hour

Table 1 - Pre-verification

3.2. 2. Removal and Replacement

See the Spare Parts Manual (SP 6008 5771) and procedure in the Service Manual (SM 6008 5772 chapter 3.3.4):

Part / Module	Page / Pos	Action	Qty	P/N	OK
Membrane, ø12 for Back Pressure Valve	23/6	Replace	1	6005 3831	[]
Cuvette MilkoScan FT3 SP (in plastic box)	20/3 5	Replace/ Hand over	1	6010 0192	[]
O-ring Ø003.00xØ1.00 for Inline Filter	20/2	Replace	1	6001 5107	[]
Inline Filter, Mesh Filter	20	Check/ve rify	1		[]
O-ring ø002.50/ø1.00 FPM 80	30/18	Replace	1	6001 5423	[]
O-ring ø003.70xø1.20 FPM 70	30/17	Replace	1	6010 9865	[]
Tube ø1/8"/ø01.60 PTFE L=0130mm assy	40/5 6	Replace	1	6007 0955	[]
Tube ø01.59/ø03.18 PTFE L=0725 assy	40/5 3	Replace	1	6007 4464	[]
Tube Ø01.59/Ø03.18 PTFE L=0415 assy	40/5 4	Replace	1	6007 5536	[]
Tube ø01.59/ø03,18 PTFE L=0145 assy 1	40/5 50	Replace	1	6009 1427	[]
Tube øø 008/016 Silicone as Waste tube	6/4	Replace	1	6007 8292	[]
Repair Kit Syringe Piston Tip	30/B	Replace	1	6010 8261	[]
Motor step 43×43mm, Screw L=2 in cpl 2	30/12	Grease	2	6009 0139	[]

Part / Module	Page / Pos	Action	Qty	P/N	OK
Repair Kit Valve Flow house ø0.8, FKM	30/2 2	Replace	2	6010 9532	[]
Repair Kit Syringe Piston Tip	26/B	Replace	1	6010 8261	[]
Motor step 43×43mm, Screw L=2 in cpl 2	26/11	Grease	2	6009 0139	[]
Repair Kit Valve Flow house ø1.2, FKM	26/B	Replace	1	6010 9531	[]
Label sheet, Clean and Zero for Container Lids and Containers		Replace	1	6008 8049	[]
Time required					3 hours

Remove/Replace

1 - Only if instrument is equipped with Conductivity Module.

2 - Motor Spindle should be lightly greased with Kryton 206 (P/N 6007 9634 Lubricant 57 g).

3.3. 3. Post-verification of Instrument after PM

See the procedure in the Service Manual (SM 6008 5772 chapter 3.3.5):

No.	Instrument Performance Test	Batch number	OK
1	Perform the Instrument Verification by the end of PM		<input type="checkbox"/>
2	Perform a Clean and a Zero Setting	N/A	<input type="checkbox"/>
Time required			0.2 hour

Table 3 - Post-verification

3.4. 4. Instrument Check

See the procedure in the Service Manual (SM 6008 5772 chapter 3.3.6):

No	Action	OK
.		
1	Check Diagnostic center for any detected events (no events accepted)	<input type="checkbox"/>
2	Check (view log) and create an "event log report" in Instrument performance reports	<input type="checkbox"/>
3	Perform "Back up the entire database"	<input type="checkbox"/>
4	Perform "Clean up data"	<input type="checkbox"/>
5	Redo "Back up the entire database"	<input type="checkbox"/>
6	Check "Flow system check" (no warnings/errors accepted)	<input type="checkbox"/>
7	Check "Sample pipette leak check" (no warnings/errors accepted)	<input type="checkbox"/>
8	Check "IR system check - measure with no cuvette flow" (no warnings/errors accepted)	<input type="checkbox"/>
9	Check "Flow system leak diagnostic tool" (no warnings/errors accepted)	<input type="checkbox"/>
10	Export Wear log at "Save service data to file". Send to Global Help Desk	<input type="checkbox"/>
Time required		0.5 hour

Table 4 - Instrument Check

3.5. 5. Software

See the procedure in the Service Manual (SM 6008 5772 chapter 3.3.7):

Action	Version Number	OK
Currently installed version of Nova		<input type="checkbox"/>
Perform an upgrade to the latest version (if needed)		<input type="checkbox"/>
Time required		0.5 hour

Table 5 - *Software verification*

3.6. 6. Instrument Performance Verification

See the procedure in the Service Manual (SM 6008 5772 chapter 3.3.8):

No.	Instrument Performance Test	OK
1	Perform a Zero Setting	<input type="checkbox"/>
2	Perform a Clean and a Zero Setting	<input type="checkbox"/>
3	Repeatability test on homogenized whole milk	<input type="checkbox"/>
4	Carry over test	<input type="checkbox"/>
5	Volume check	<input type="checkbox"/>
6	Perform a Clean and a Zero	<input type="checkbox"/>
Time required		0.5 hour

Table 6 - Instrument verification

Note: The total time is an approximate time. Depending on e.g. the current status and the accessibility of the instrument, this time might vary. Please round off to nearest quarter of an hour.

**Total
Time
[Hours]**
5

4. Untitled
